

XBOX 360 SATA mod – The tutorial

Last modified: 17/01-07

Version: 1.0

This is the tutorial for the XBOX 360 sata mod.

This is made to simplify the firmware flash procedure, so you don't have to strip down your xbox everytime.

This is what you need:

- SATA bracket with 2 ports – almost every computer / electronics store has them. I bought mine for 50 DKR (about 8 \$)
- Hacksaw
- Drilling machine
- 2mm metal drill (bigger or smaller will also work, a smaller drill takes longer time, a bigger one might be inaccurate)
- 3,5mm wood drill (This is the diameter of the pre-made vertical holes on the back of the 360's plastic case)
- Paper tape
- Piece of wood
- Clamp
- File (a small one. I used the one from my Leatherman multitool, this was perfect for the job)



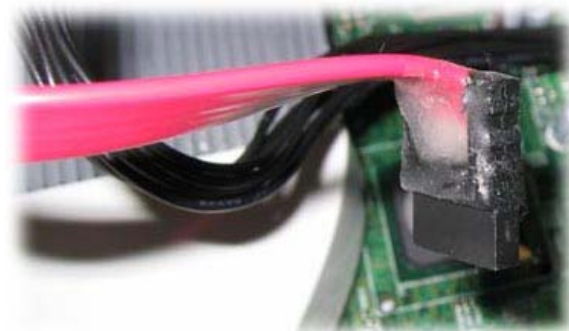
Note: The whole cutting/drilling procedure can be done easier if you are the happy owner of a Dremel. With this tool you can easily cut horizontal lines. This guide though, assumes that you don't have that kind of tool, so you need at least a drilling machine and a file.

Step 1 – prepare the sata cables

Remove the connectors from the metal, keep the screws...

Now you need to modify one of the SATA connectors, by making it right angled instead of straight, in order to make it fit under the DVD drive. I used a hobby knife to cut away some of the black plastic / rubber, be careful not to cut through...

After the cutting, I put on some “silicone-like” glue to make sure it stays together. I guess you can use whatever glue you like :)



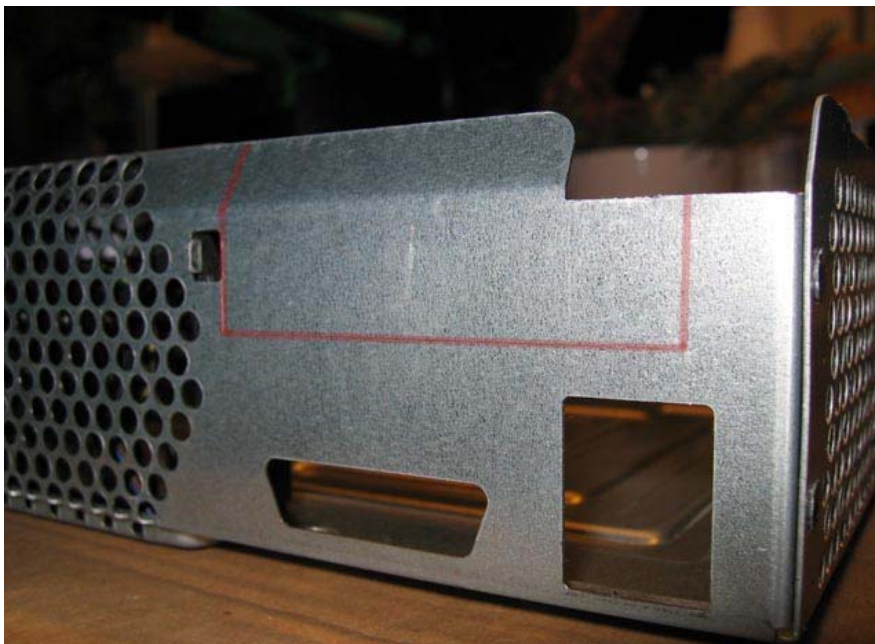
Step 2 – prepare the metal case

Now, strip down your xbox completely... If you don't know how to do this, try Google :)

Your 360 should now look something like this:



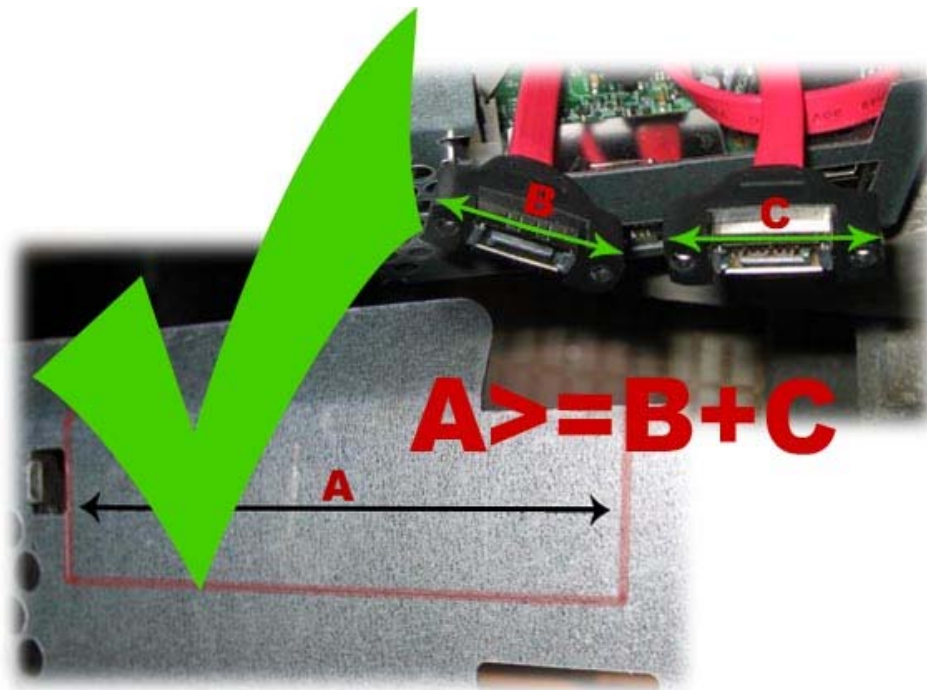
Make sure to remove the fans too, I just didn't remove mine before I took the picture.



Now, mark up the cut-lines. I didn't write down the measurements, so I can't tell you where exactly to cut.

The only important thing to remember, is to make sure that the length $A \geq B+C$ – in order to make the SATA ports fit in.

Like this :-)



Now, load your hacksaw, and cut down through the vertical lines... Piece of cake. You might wanna place the clamp, with a piece of wood inside the case. This stabilizes, and makes the saw easier to handle.

Afterwards, put some paper tape (other kinds of tape might work too) just above the cutting line.



This is done to make sure that the drill doesn't slip around. Now, drill just above the cutting line, as shown on the picture. Place the holes with minimal space between each other.

When this is done, you can break off the metal piece.



Afterwards, find your file, and make some smoooooth edges :)

Damn, MS wouldn't even notice anything if I they saw this :-D



Now you're done with the metal case, lets move on to the plastic part...

Step 3 – prepare the plastic case

Well, I don't have that many pictures from this state, so I'm gonna explain it as well as I can...

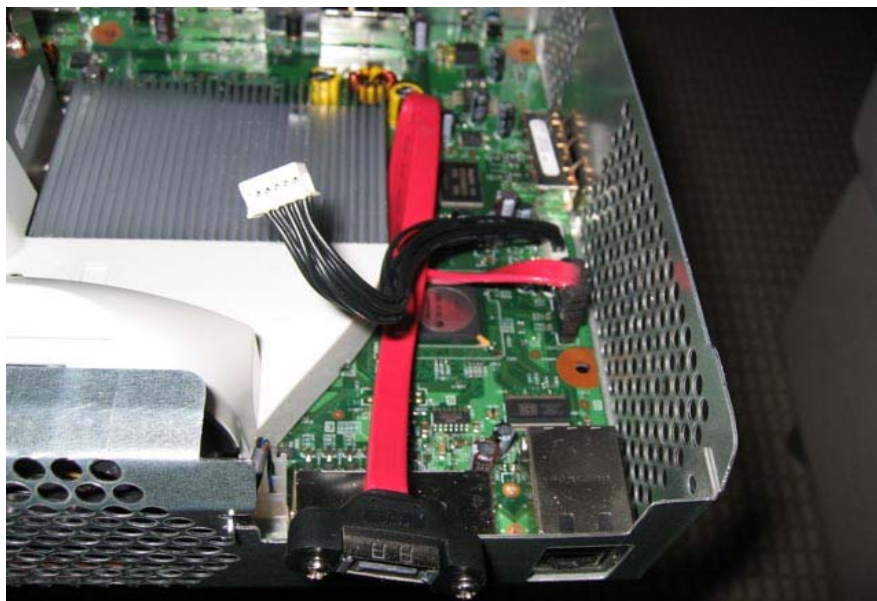


As you can see on the picture, I used the pre-made vertical hole in the plastic case. (the first screw from left) – Then I just used a vernier for all the measuring, so this was actually pretty simple. The rectangular holes between the screws was made by drilling (3-4 holes I think, with the 3,5mm wood drill) and then use the file to make it rectangular.

Step 4– Installation

You can now put your 360 motherboard back in place. Make sure to use a vacuum cleaner, to remove all the small metal pieces and dust.

Remove the original SATA cable from the motherboard, put in your customized angled SATA cable, like this:



Now, put back the DVD drive, and connect the second SATA cable from the bracket, like this:



You might notice that the DVD drive is placed some mm higher than normal, because the angled SATA cables are not low enough, well in my case though, it's possible that you are able to make it lower than me :) - Whatsoever, it had no influence for me...

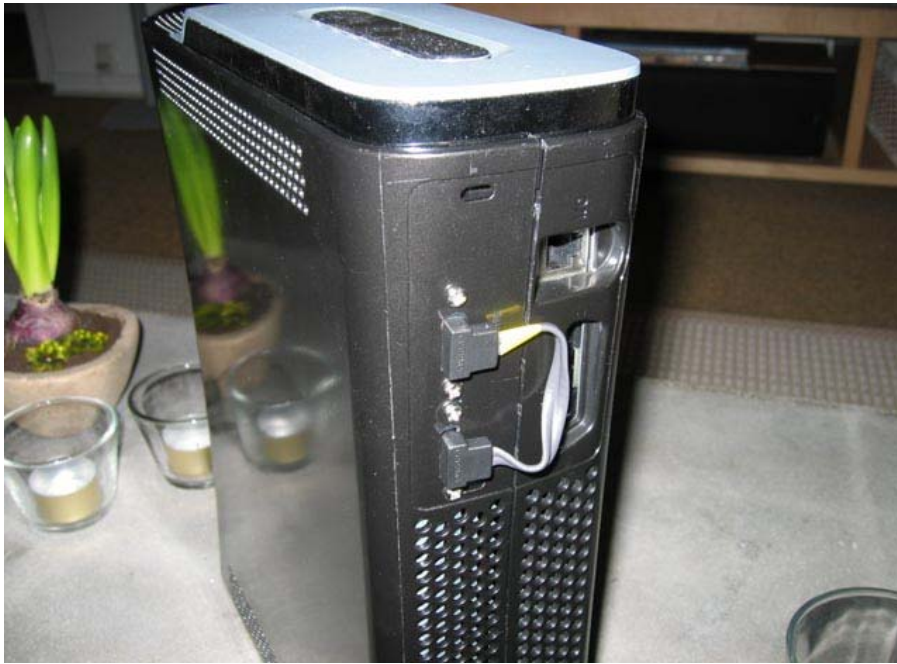
Now you're good to go. But before you put back on the plastic case, you might want to test that everything works as it should...

After the test, put on the case...

The first couple of times, it can be a bit tricky to tighten the screws to the SATA connectors through the holes in the plastic case.



Connect the original xbox 360 SATA cable.



All set... Now you don't have to pop the hood everytime you need to flash your drive...

/aaroo

http://www.sorenaaroo.com/xbox360/sata_mod/